

PATTERN FOR BLACK FEATHERWEIGHT 221 BED LINER

11 3/4 X 7 1/2

**CUT 1
(CUT 2 IF USING A LINER)**

You must print using LEGAL size paper (8.5 x 14)

1. HEM AROUND THE ENTIRE BOTTOM OF THE EXTENSION PIECE (THIS IS THE SMALLER PIECE WITH WINGS. IT IS EASIER TO DO THIS BEFORE ATTACHING TO THE LARGER PIECE.
2. WITH RIGHT SIDES OF THE FABRIC TOGETHER, MATCH THE SMALLER PIECE TO THE LARGER BED PIECE AT THE CENTER ARROWS. CLIP THE TWO CORNERS ON THE SMALLER PIECE; PIN IN PLACE, GRAB THE EDGE OF THE 'WING' AND PIN ONTO THE LARGER PIECE. THIS WILL FORM A 'TENT' WITH THE FABRIC, WHICH BECOME THE SLEEVE. STITCH THE THREE EDGES TOGETER.
3. HEM THE REMAINING EDGES OF THE LARGER PIECE OF FABRIC.

****IF USING A LINER, PLACE THE FABRICS WRONG SIDES TOGETHER WHILE DOING THE ABOVE STEPS****



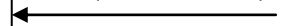
MARK CENTER POINT OF THE FABRIC.
THIS IS WHERE THE TWO FABRIC WILL BE
SEWN TOGETHER.

**FIND THE CENTER BY FOLD-
ING EACH FABRIC PIECE TO-
GETHER ON THIS EDGE AND
MARK THE CENTER ON EACH
PIECE.**



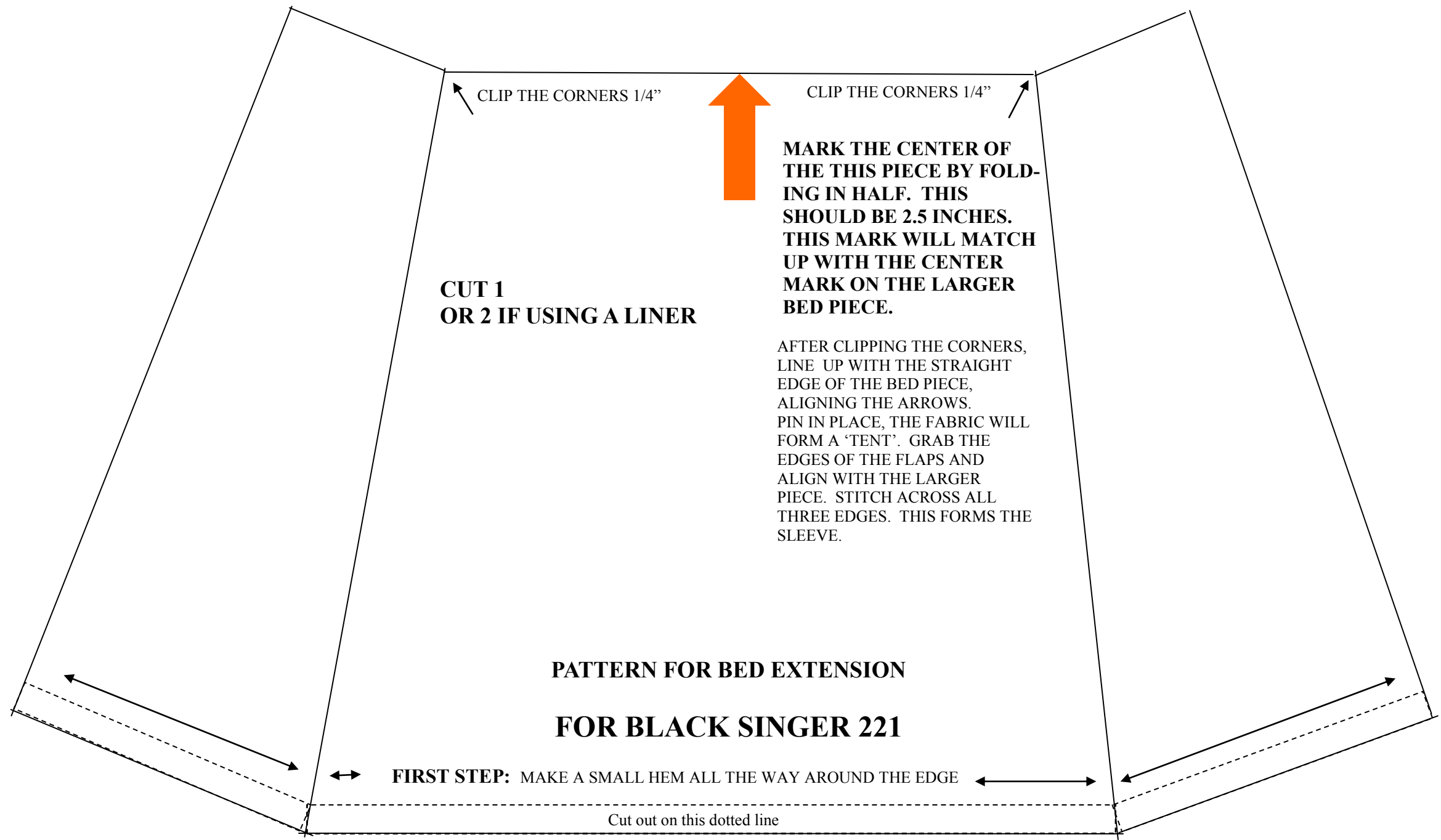
**FOR WHITE
FEATHERWEIGHT
CUT TO THIS LINE**

(10.5" x 7.5")



**FOR BLACK
FEATHERWEIGHT
CUT FROM THIS LINE**





**CUT 1
OR 2 IF USING A LINER**

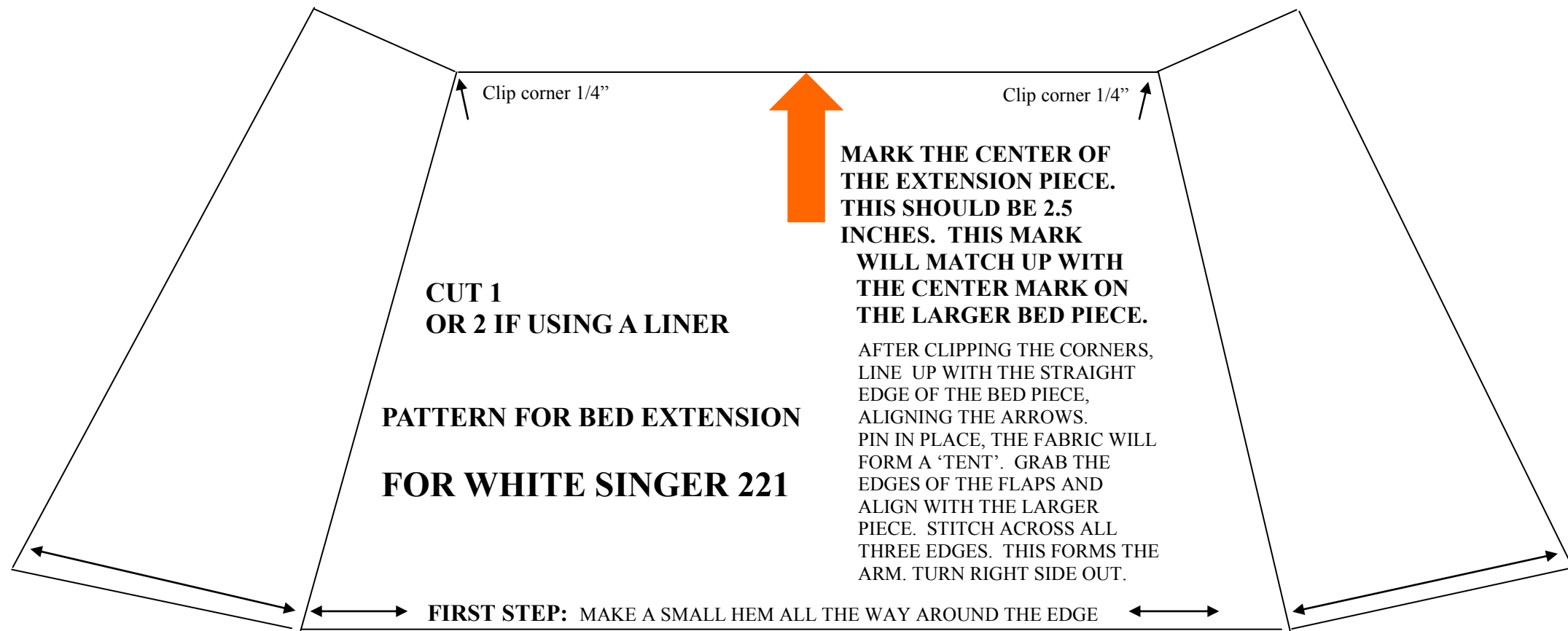
**MARK THE CENTER OF
THE THIS PIECE BY FOLD-
ING IN HALF. THIS
SHOULD BE 2.5 INCHES.
THIS MARK WILL MATCH
UP WITH THE CENTER
MARK ON THE LARGER
BED PIECE.**

AFTER CLIPPING THE CORNERS,
LINE UP WITH THE STRAIGHT
EDGE OF THE BED PIECE,
ALIGNING THE ARROWS.
PIN IN PLACE, THE FABRIC WILL
FORM A 'TENT'. GRAB THE
EDGES OF THE FLAPS AND
ALIGN WITH THE LARGER
PIECE. STITCH ACROSS ALL
THREE EDGES. THIS FORMS THE
SLEEVE.

**PATTERN FOR BED EXTENSION
FOR BLACK SINGER 221**

FIRST STEP: MAKE A SMALL HEM ALL THE WAY AROUND THE EDGE

Cut out on this dotted line



**CUT 1
OR 2 IF USING A LINER**

**PATTERN FOR BED EXTENSION
FOR WHITE SINGER 221**

**MARK THE CENTER OF
THE EXTENSION PIECE.
THIS SHOULD BE 2.5
INCHES. THIS MARK
WILL MATCH UP WITH
THE CENTER MARK ON
THE LARGER BED PIECE.**

AFTER CLIPPING THE CORNERS,
LINE UP WITH THE STRAIGHT
EDGE OF THE BED PIECE,
ALIGNING THE ARROWS.
PIN IN PLACE, THE FABRIC WILL
FORM A 'TENT'. GRAB THE
EDGES OF THE FLAPS AND
ALIGN WITH THE LARGER
PIECE. STITCH ACROSS ALL
THREE EDGES. THIS FORMS THE
ARM. TURN RIGHT SIDE OUT.

FIRST STEP: MAKE A SMALL HEM ALL THE WAY AROUND THE EDGE